



ICSI

Town Hall Meeting

October 18, 2012

Roberto Pieraccini
Director
roberto@ICSI.berkeley.edu

ICSI.Berkeley.edu | twitter.com/ICSiatBerkeley | blog.ICSI.berkeley.EDU
facebook.com/ICSiatBerkeley | youtube.com/ICSiatBerkeley

ICSI Board

NEW MEMBERS (OCT 2012)

- Greg Badros (FaceBook)
- Deborah Crawford (Drexel)
- Mazin Gilbert (AT&T Labs)
- Barbara Grosz (Harvard)
- Eric Horvitz (Microsoft Research)
- Martti Mäntylä, (ICT-Labs, Aalto)



EXISTING MEMBERS

- Hervé Bourlard (IDIAP, EPFL)
- David Culler (UCB)
- Graham Fleming (UCB)
- Cliff Higgerson (Walden Int.l)
- Nelson Morgan (ICSI)
- David Nagel (Ascona Group)
- Roberto Pieraccini (ICSI)
- Prabhakar Raghavan (Google)
- Scott Shenker (ICSI, UCB)
- Wolfgang Wahlster (DFKI)

DEPARTING MEMBERS

- David Tennenhouse (Microsoft)

ICSI Board Meeting October 2012

ICSI IN A NUTSHELL

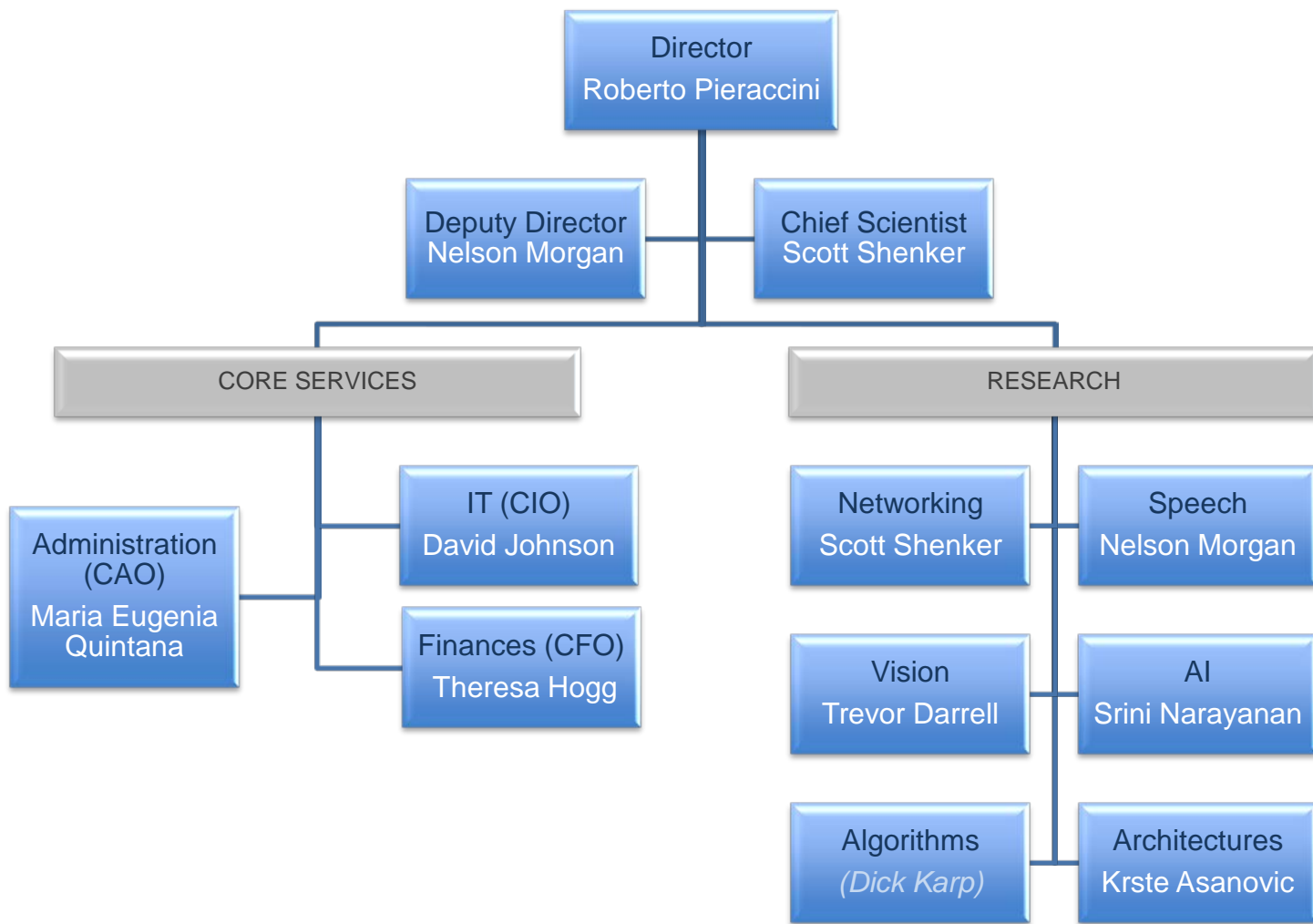
What is ICSI

- Independent non-profit organization
- Started in 1986 as a joint venture between UCB and the German Research Center for Information Technology
- Affiliation with UCB allows for double appointees and sharing of resources
- Focus on fundamental research in computer science
- Mostly supported by US federal funds
- International visitor's program and industrial relationships are secondary sources of revenue
- Yearly budget ~\$12M (2012)

Corporate Structure

- Chair of the board
 - Prabhakar Raghavan
- Named officers
 - President (Roberto Pieraccini, Director)
 - Vice-President (Nelson Morgan, Deputy Director)
 - Treasurer (Theresa Hogg, CFO)
 - Secretary (David Johnson, CIO)
- Other officers
 - Chief Administrative Officer (Maria Eugenia Quintana)
- Executive committee
 - Prabhakar Raghavan, Wolfgang Wahlster, Cliff Higgerson, David Nagel
- Audit committee
 - Cliff Higgerson, David Nagel

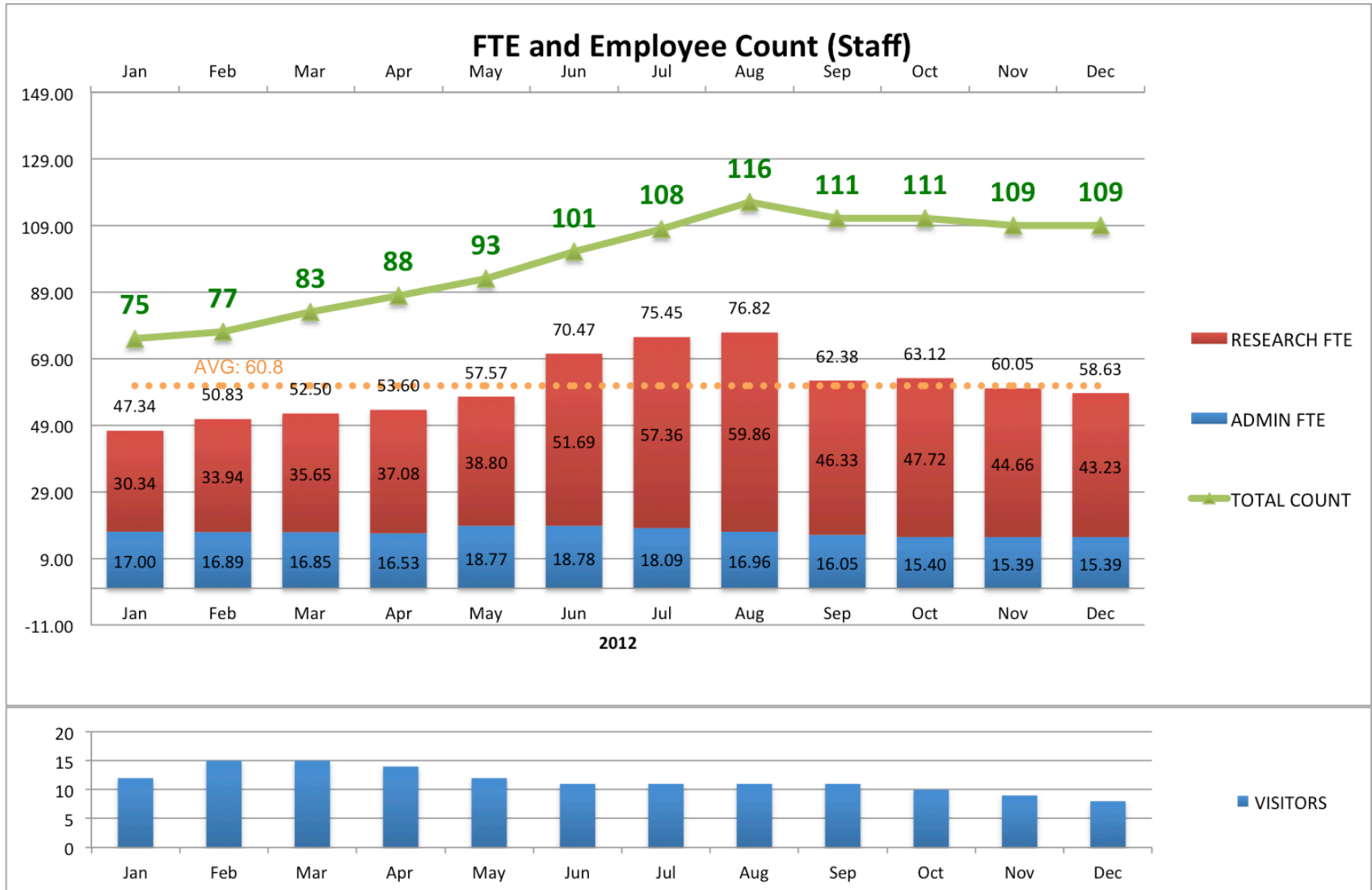
ICSI structure



People at ICSI (Historical)



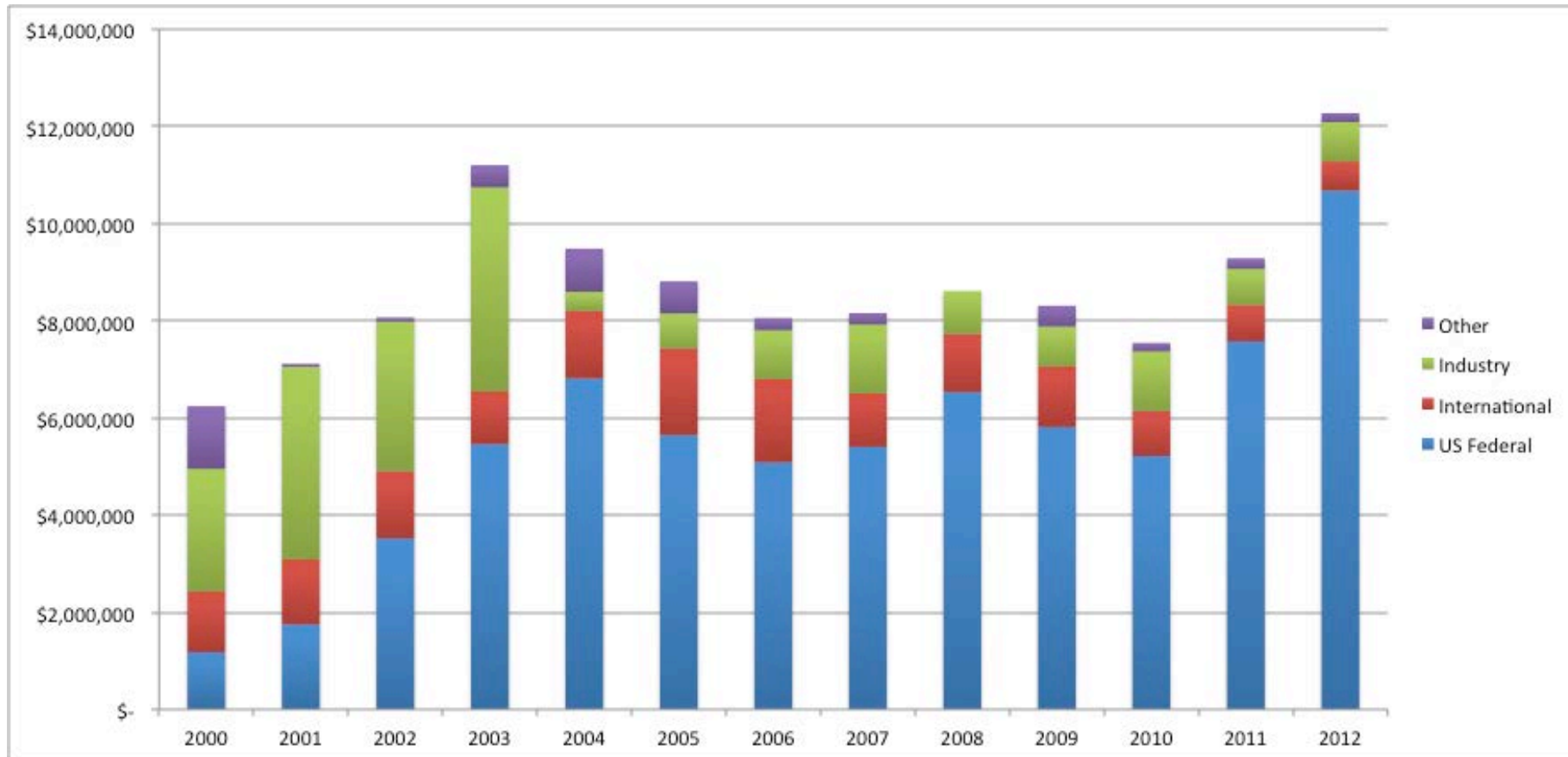
People at ICSI



ICSI Board Meeting October 2012

FINANCIALS

ICSI Revenue 2000-2012



ICSI Revenue (Aug 2012)

2012 BUDGET (ESTIMATED)

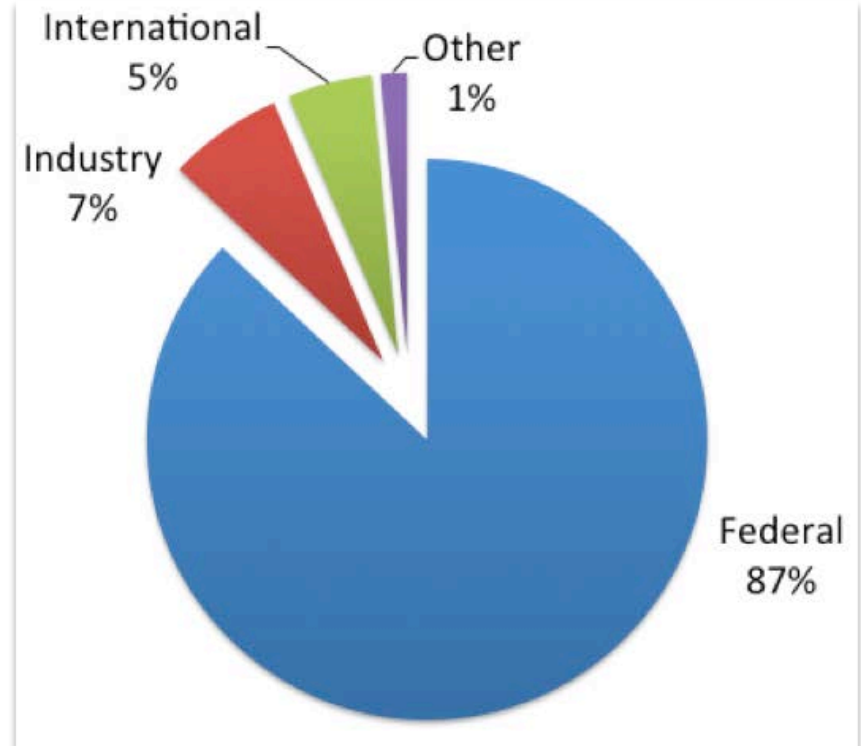
TOTAL REVENUE	\$	12,273,435
TOTAL EXPENSES	\$	11,769,707
NET INCOME	\$	503,728

REVENUE BREAKDOWN

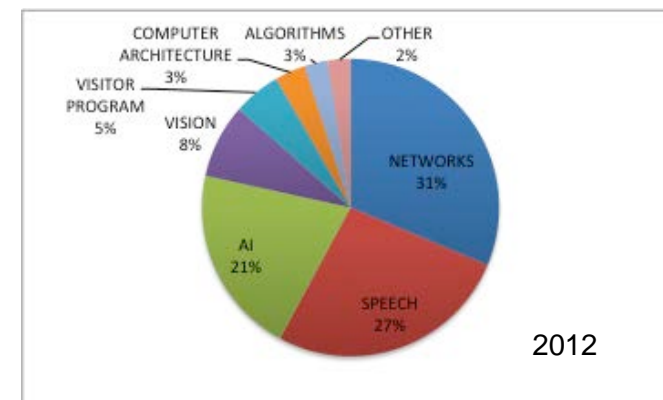
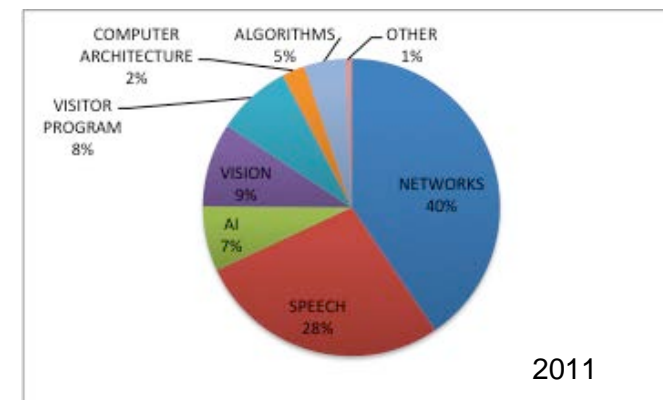
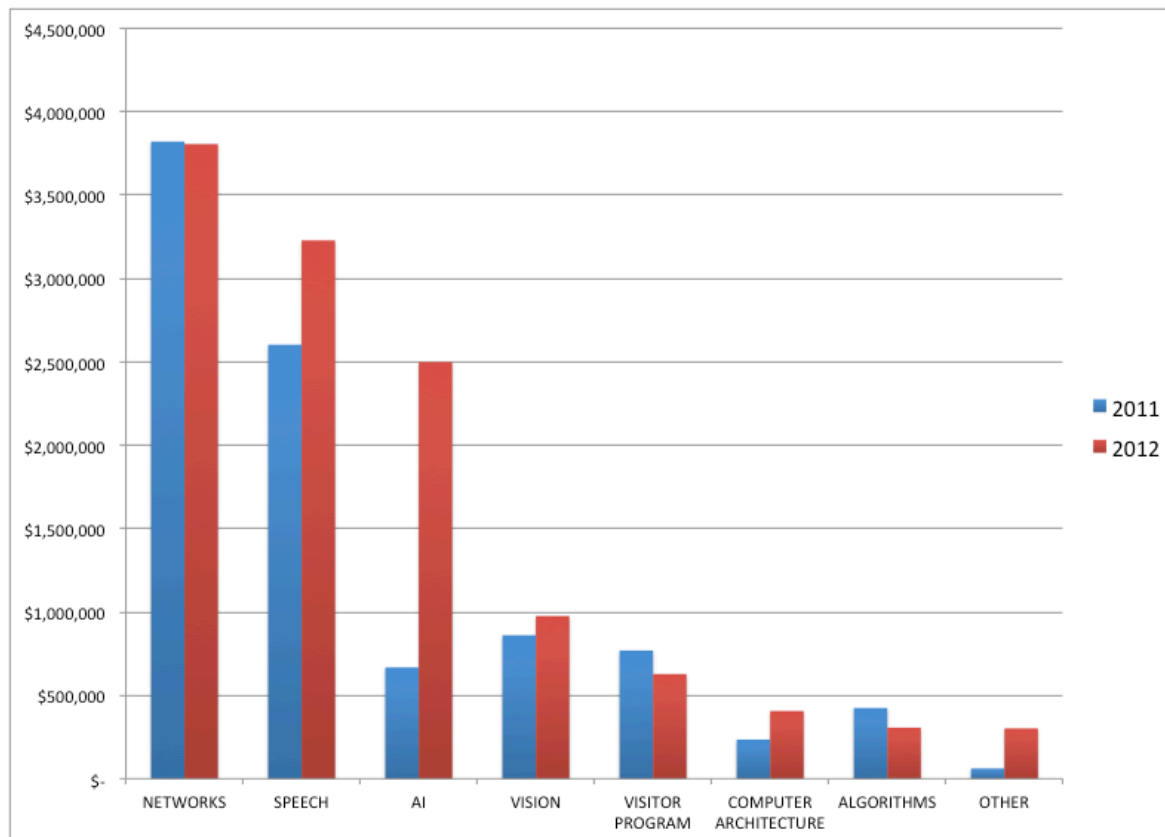
IARPA	\$	3,519,020	28.7%
NSF	\$	3,712,385	30.2%
Federal - Other	\$	1,949,506	15.9%
DARPA	\$	1,496,671	12.2%
Industry	\$	812,537	6.6%
International	\$	598,334	4.9%
Other Projects	\$	137,555	1.1%
Interest Revenue	\$	47,427	0.4%
TOTAL	\$	12,273,435	

EXPENSE BREAKDOWN

PERSONNEL	\$	7,449,319	63.3%
SUB-AWARDS	\$	1,449,520	12.3%
BUILDING RENT	\$	994,054	8.4%
TRAVEL	\$	273,757	2.3%
EQUIPMENT	\$	219,889	1.9%
CONSULTANTS	\$	115,000	1.0%
MARKETING	\$	21,820	0.2%
OTHER	\$	1,246,349	10.6%
TOTAL	\$	11,769,707	



Revenue per group



ICSI Board Meeting October 2012

MARKETING

Social Media

ICSI - International Computer Science Institute
77 likes · 14 talking about this · 11 were here

Educational Research
ICSI is a leading center for computer science research.

About

PHOTOS

Post

Write something...

ICSI - International Computer Science Institute shared a link.
Friday

Using machine learning and crowd-sourcing techniques, researchers at Brown University and the Berlin Institute of Technology have built a Pictionary partner - a computer that guesses sketches in real time.

Video - Computer identifies sketches as you draw
bcove.me

Video: Computer identifies sketches as you draw

Like · Comment · Share

Charles Wooters and Balaji Krishnan like this.

Write a comment...

Tweet to ICSI
@ICSIatBerkeley

Tweets

ICSI @ICSIatBerkeley
Interesting new project at ICSI looking at icsi.berkeley.edu/icsi/projects/...
Expand

ICSI @ICSIatBerkeley
Meet Chuck Wooters, a speech recognition expert, returned to ICSI: icsi.berkeley.edu/icsi/tv...
Expand

ICSI @ICSIatBerkeley
If you missed Gerald Friedland's cybercasing talk, he is speaking again today at 4:00 at UC: eecs.berkeley.edu/Colloquium/Arc...
Expand

ICSI @ICSIatBerkeley
Richard Karp is speaking (as part of the celebration of Alan Turing tonight) marl...
Expand

ICSI @ICSIatBerkeley
Cybercasing talk by Gerald Friedland at icsi.berkeley.edu/icsi/events/20...
Expand

ICSI @ICSIatBerkeley
Version 2.1 of Bro is now available for ids.org/2012/06/bro-21... (Follow @Bro, Bro news.)
Expand

ICSI @ICSIatBerkeley
On Tues. Sep. 4th at 2:00 pm, Gerald Friedland on cybercasing at ICSI. Details: icsi.berkeley.edu/icsi/blog/onli...
Expand

ICSI @ICSIatBerkeley
Think before you post - advice regarding privacy: icsi.berkeley.edu/icsi/blog/onli...
Expand

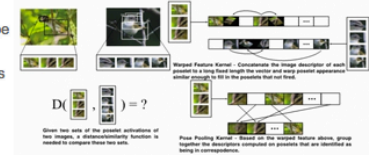
ICSI @ICSIatBerkeley
Richard Karp, leader of the Algorithms Group, speaks at Princeton University's celebration of Alan Turing: youtube.com/watch?
Expand

© 2012 Twitter About Help Terms Privacy
Blog Status Apps Resources Jobs
Advertisers Businesses Media Developers

New Research: Improving Computer Vision with Poselets

Wednesday, May 16, 2012

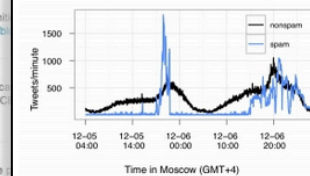
Computer vision techniques have trouble recognizing subcategories of objects (for example, a vehicle's model type or a bird's species). A new method developed by ICSI researchers improves automatic recognition of subcategories by first warping small areas of photos to account for differences in pose and angle, and then grouping the areas according to their similarities.



Read more → Add new comment

New Research: Studying Twitter Spam's Use in Political Censorship

Wednesday, May 9, 2012



Spammers who posted almost half a million Twitter messages in order to silence debate over Russia's election in December likely purchased fraudulent accounts in bulk and posted the tweets from botnets, groups of malware-infected computers under the command of a single person. According to Networking Group researchers, the campaign took advantage of an underground economy based on spam, a phenomenon that researchers are studying in an attempt to improve methods of eliminating spam.

Read more → Add new comment

Profile: Charles Fillmore

Monday, May 7, 2012



Charles Fillmore is one of the founding fathers of linguistics as it is practiced today. A professor emeritus of UC Berkeley, Chuck is also the director of ICSI's **FrameNet Project**, which is building a lexical database, usable by both machines and humans, that describes the relationships between words in order to extract meaning from texts. The work requires the intellectual flexibility and passion for language that have marked his sixty-year career.

Read more → Add new comment

ICSI Inhouse news

An email newsletter from ICSI to ICSI

From: **ICSI**
Subject: ICSI Inhouse News
Date: September 25, 2012 10:57:21 AM PDT
To: inhouse@icsi.berkeley.edu
Reply-To: info@ICSIBerkeley.EDU

[Web version](#) | [Update preferences](#) | [Unsubscribe](#)



ICSI on Twitter (@ICSIBerkeley)

On our Facebook page, a shot of the Endeavor flying over ICSI's roof Friday morning -
<https://www.facebook.com/ICSIBerkeley>

Meet Chuck Wooters, a speech recognition researcher who recently returned to ICSI:
<http://bit.ly/blog-wooters>

If you missed Gerald Friedland's cybercasing talk at ICSI yesterday, he is speaking again today at 4:00 at UCB:
<http://bit.ly/cybercasing>

Richard Karp is speaking (as part of the panel) at MSR's centenary celebration of Alan Turing tonight <http://bit.ly/karp-turing-talk>

Cybercasing talk by Gerald Friedland at ICSI today - 2:00 p.m.
<http://bit.ly/cybercasing-talk>

Version 2.1 of Bro is now available for download <http://bit.ly/bro-release> (Follow @Bro_IDS to stay up to date on Bro news.)

Think before you post - advice regarding cybercasing & online privacy:
<http://bit.ly/blog-online-privacy>

Richard Karp, leader of the Algorithms Group, speaks at Princeton University's

NSF Awards \$10 Million Grant to ICSI and Collaborators to Study Human Element of Cybercrime

ICSI, the University of California, San Diego, and George Mason University have received a \$10 million, five-year grant from the National Science Foundation to investigate the roles played by economics and social interactions in Internet security.

"During our earlier work on analyzing the factors that go into making spam a profitable form of cybercrime, we were deeply struck by the significance of the human side of the equation," said Vern Paxson of ICSI's Networking Group, one of the leaders of the project and a UC Berkeley professor. "Non-technical considerations span business concerns, issues of trust-amongst-thieves, and the rise of social media as both a new domain that cybercrime is expanding into, and a way to track interactions amongst the criminals themselves."

Security research has tended to focus on the technologies that enable and defend against attacks. The new project, led by Paxson and Stefan Savage of UC San Diego, emphasizes the profits that motivate the majority of Internet attacks, the elaborate marketplaces that support them, and the relationships among cybercriminals, who rely upon each other for services and expertise.

Read more in the [ICSI press release](#).

DAAD-Funded Postdocs Join ICSI

Tracking exposure

Google Analytics

ICSI - http://www.icsi.berkeley.edu
ICSI [DEFAULT]

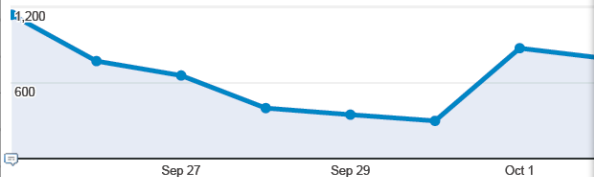
Pages

% of pageviews: 100.00%

Explorer

Site Usage

Pageviews



Pageviews

8,451

% of Total: 100.00%
(8,451)

Unique Pageviews

6,408

% of Total: 100.00%
(6,408)

Avg. Time on Page

00:01:21

Site Avg: 00:01:21
(0.00%)

Entrances

3,077

% of Total: 100.00%
(3,077)

☐

Page

Pageviews

Unique Pageviews

Page	Pageviews	Unique Pageviews
1. /icsi/	1,659	1,312
2. /icsi/news/2012/09/frontier-cybercrime-economy	411	336
3. /icsi/gazette/2012/09	256	48
4. /icsi/user	205	149
5. /icsi/about	201	156
6. /icsi/links	3	100
7. http://icsi.berkeley.edu/	3	3.33
8. international computer science institute berkeley	3	5.33

Sep 25, 2012 - Oct 8, 2012

ICSI - International Computer Science Institute

http://www.facebook.com

Search for people, places and things

Christopher Voice

You are posting, commenting, and liking as ICSI - International Computer Science Institute -- Change to Christopher Switzer Switzer

ICSI - International Comp... Timeline

Liked

Overview Likes Reach Talking About This Check-Ins

All dates and times are in Pacific Time

Export Data

Total Likes? 86 2.38% Friends of Fans? 26,896 2.79% People Talking About This? 13 -7.14% Weekly Total Reach? 535 -4.46% Total Subscribes? --

Posts? People Talking About This? Weekly Total Reach?



Page Posts (Updated 58 seconds ago)

All Post Types

Date ?	Post ?	Reach ?	Engaged Users ?	Talking About This ?	Virality ?
10/2/12	Check out our September newsletter...	58	12	10	17.24%
9/28/12	Water on Mars? According to NASA...	59	2	—	—
9/26/12	Yesterday Rick Merritt of EE Times ...	74	9	4	5.41%